



Madison, Wisconsin

# CITY OF MADISON

## CITY ENGINEERING DIVISION

### DEPARTMENT OF PUBLIC WORKS

# PLAN OF PROPOSED IMPROVEMENT

## SPRECHER ROAD GREENWAY IMPROVEMENT

PUBLIC IMPROVEMENT PROJECT  
APPROVED

APPROVED DATE  
DECEMBER 16, 2021

BY THE COMMON COUNCIL  
OF MADISON, WISCONSIN

PUBLIC IMPROVEMENT DESIGN  
APPROVED BY:

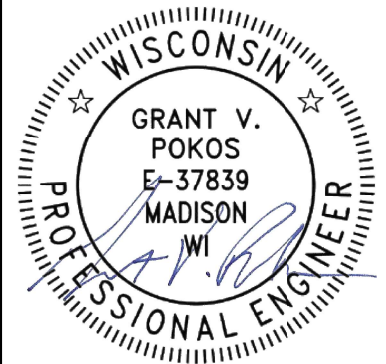
*Greg Fries*

Dec 15, 2021

City Engineer

Date

STORM SEWER  
DESIGNED BY:

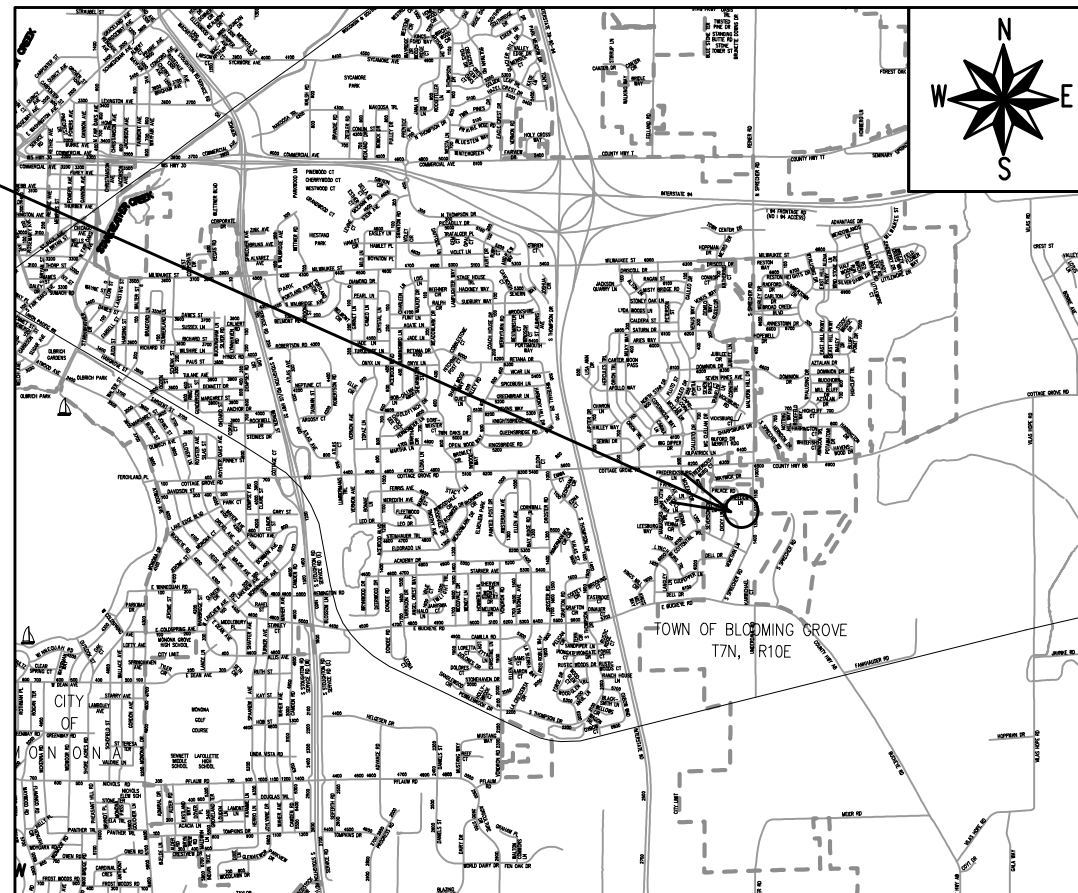


#### INDEX OF SHEETS

SHEET NO. 1	COVER SHEET
SHEET NO. EX1	EXISTING CONDITIONS
SHEET NO. GP1	GRADING & EROSION CONTROL PLAN
SHEET NO. U1	STORMSEWER PLAN & STORM SCHEDULE
SHEET NO. CP1	CLEARING PLAN
SHEET NO. VP1	VEGETATION PLAN
SHEET NO. P1-P2	GREENWAY PLAN & PROFILES
SHEET NO. X1-X4	GREENWAY CROSS SECTIONS

CITY PROJECT NO. 12960  
CONTRACT NO. 9430

PROJECT  
LOCATION



#### UTILITY CONTACTS

MG&E (Gas): Roger Ahles 608-252-5682

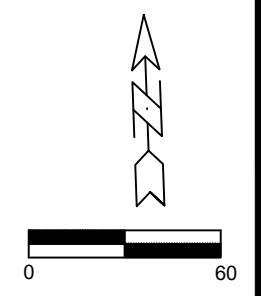
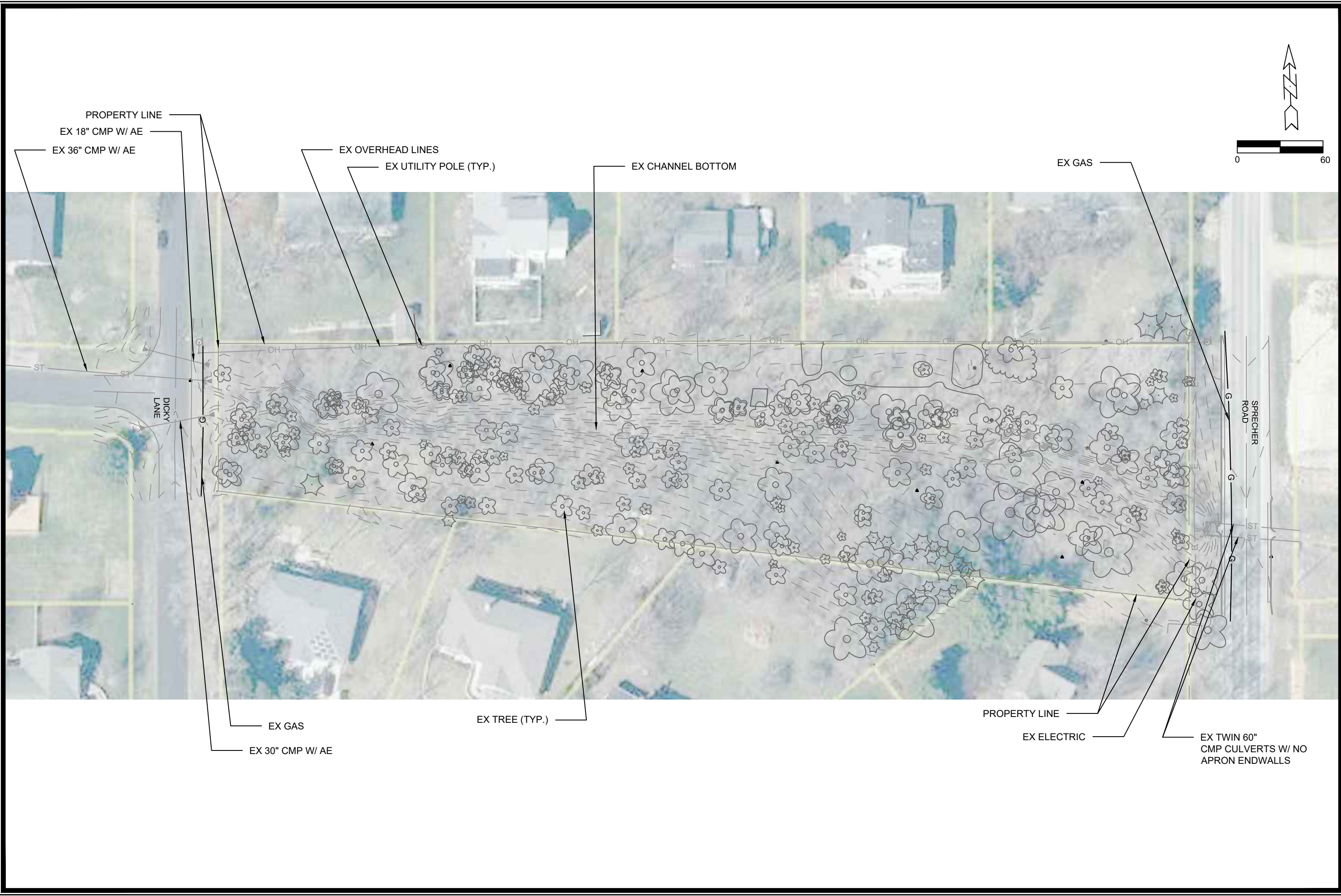
MG&E (Elec) Tony Sanfratello 608-252-7397

PLOT SCALE: 1:1\_XREF

PLOT NAME:

REV. DATE: 12/9/2021 4:31 PM

ORIGINATOR: CITY\_OF\_MADISON



MARK	REVISION	DATE	BY
12960	12960	12/14/2021	3:41 PM
12960	EX1		

12960  
 MADISON, WI  
 CONTRACT NO: 9430  
 EXISTING CONDITIONS  
 SPRECHER ROAD GREENWAY IMPROVEMENTS  
 M:\DESIGN\Projects\12960\CAD\Storm\12960 Sprecher Greenway Existing.dwg

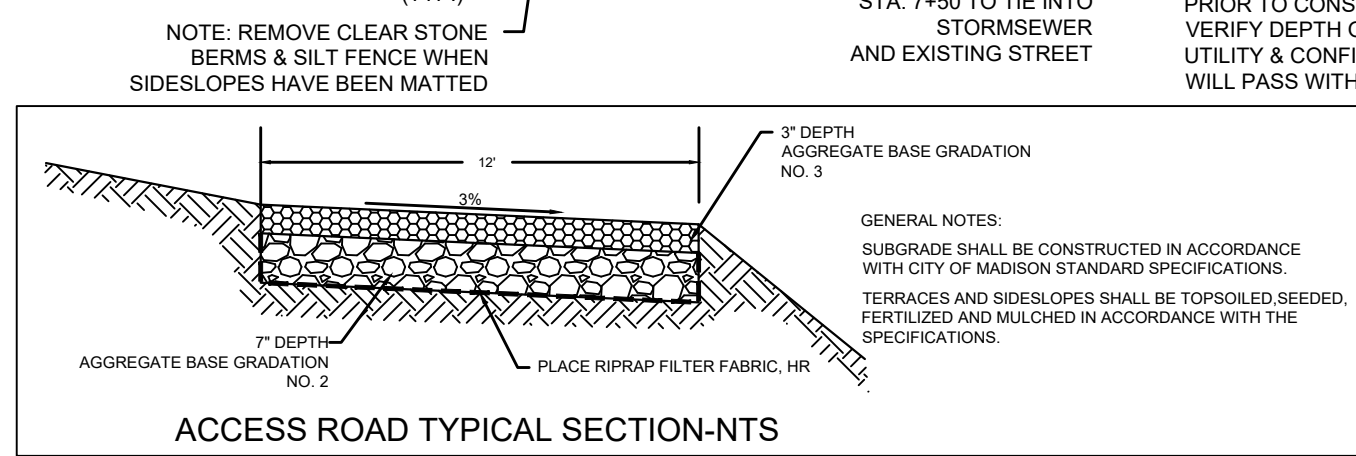
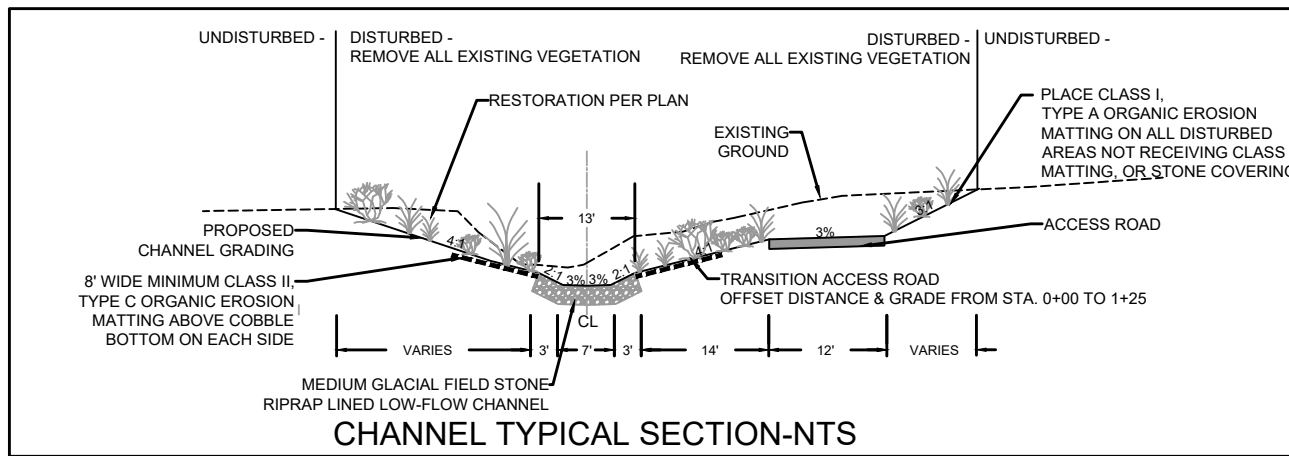
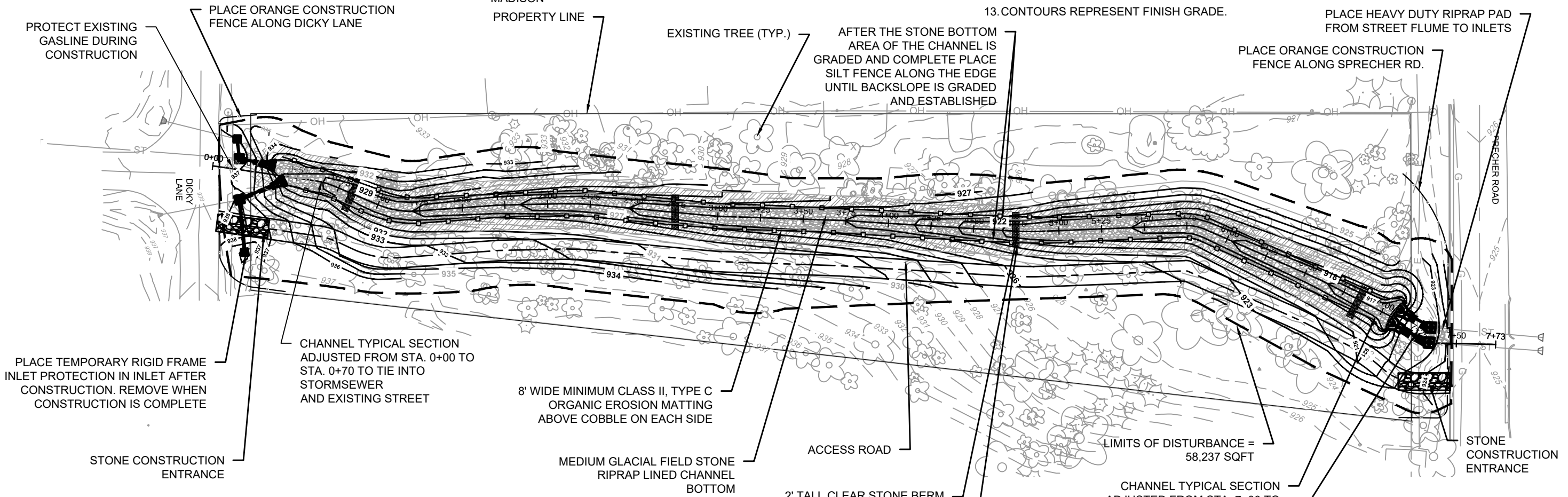
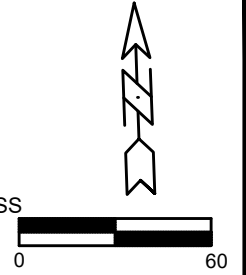
12960  
 EX1

**GENERAL NOTES**

1. ALL WORK SHALL BE PER THE CITY OF MADISON STANDARD SPECIFICATIONS
2. IF ANY ERRORS, DISCREPANCIES, OR DIMENSIONS WITH PLAN BECOME APPARENT. IT SHALL BE BROUGHT TO THE ATTENTION OF THE ENGINEER PRIOR TO CONSTRUCTION
3. CONTRACTOR SHALL ENSURE THAT ALL STORMWATER DRAINS AWAY FROM BUILDING FOUNDATIONS DURING FINAL RESTORATION

**EROSION CONTROL NOTES:**

1. ALL EROSION CONTROL MEASURES SHALL BE CONSTRUCTED AND MAINTAINED BY THE CONTRACTOR IN ACCORDANCE WITH THE WISCONSIN DNR TECHNICAL STANDARDS AND CITY OF MADISON STANDARD SPECIFICATIONS.
2. INSTALL EROSION CONTROL MEASURES PRIOR TO ANY SITE WORK, MODIFICATIONS TO SEDIMENT CONTROL DESIGN MAY BE CONDUCTED TO MEET UNFORESEEN FIELD CONDITIONS. THE CONTRACTOR SHALL PLACE SILT SOCK OR SILT FENCE AT THE DIRECTION OF THE CONSTRUCTION ENGINEER.
3. EROSION CONTROL MEASURES INDICATED ON THE PLANS SHALL BE CONSIDERED MINIMUMS. IF DETERMINED NECESSARY DURING CONSTRUCTION ADDITIONAL MEASURES SHALL BE INSTALLED TO PREVENT SEDIMENT FROM LEAVING THE SITE.
4. CONTRACTOR SHALL REMOVE ALL EROSION CONTROL PRACTICES, INCLUDING DITCH CHECKS, WHEN THE SITE IS RESTORED.
5. THE CONTRACTOR IS RESPONSIBLE FOR THE CONSTRUCTION AND MAINTENANCE OF ALL EROSION CONTROL MEASURES UNTIL FINAL ACCEPTANCE BY THE CITY OF MADISON
6. NO SITE GRADING OUTSIDE OF THE LIMITS OF DISTURBANCE
7. INSTALL INLET PROTECTION IN ALL STORM SEWER INLETS AND CATCH BASINS THAT MAY RECEIVE RUNOFF FROM DISTURBED AREAS
8. CUT AND FILL SLOPES SHALL BE NO GREATER THAN 3:1
9. ALL DISTURBED AREAS SHALL BE STABILIZED WITH CLASS I, TYPE A ORGANIC EROSION MATTING AND ALL DRAINAGE SWALES SHALL BE STABILIZED WITH CLASS II, TYPE C EROSION MATTING.
10. ALL INCIDENTAL MUD TRACKING OFF-SITE ONTO ADJACENT PUBLIC THOROUGHFARES SHALL BE CLEANED UP AND REMOVED BY THE END OF EACH WORKING DAY USING PROPER DISPOSAL METHODS.
11. PREVENT EXCESSIVE DUST FROM LEAVING THE CONSTRUCTION SITE IN ACCORDANCE WITH LOCAL AND STATE REGULATIONS.
12. INSTALL EROSION CONTROLS ON THE DOWNSTREAM SIDE OF STOCKPILES.
13. CONTOURS REPRESENT FINISH GRADE.



DATE	BY
REVISION	Scale: #####
Designed By: GVP	Date: 12/14/2021 3:42 PM
MARK	12960
12960	GP1

12960  
MADISON, WI  
9430  
CONTRACT NO:  
GRADING AND EROSION CONTROL PLAN  
SPRECHER ROAD GREENWAY IMPROVEMENTS  
M:\DESIGN\Projects\12960\CAD\Storm\12960 Sprecher Greenway Storm\_Grading.dwg

12960  
GP1

GENERAL NOTES:  
SUBGRADE SHALL BE CONSTRUCTED IN ACCORDANCE WITH CITY OF MADISON STANDARD SPECIFICATIONS.  
TERRACES AND SIDESLOPES SHALL BE TOPSOILED, SEED, FERTILIZED AND MULCHED IN ACCORDANCE WITH THE SPECIFICATIONS.

NOTE: REMOVE CLEAR STONE BERMS & SILT FENCE WHEN SIDESLOPES HAVE BEEN MATTED

CONTRACTOR TO PROVIDE ULO PRIOR TO CONSTRUCTION TO VERIFY DEPTH OF EXISTING UTILITY & CONFIRM STORMSEWER WILL PASS WITHOUT CONFLICT.

LIMITS OF DISTURBANCE = 58,237 SQFT

8' WIDE MINIMUM CLASS II, TYPE C ORGANIC EROSION MATTING ABOVE COBBLE ON EACH SIDE

CHANNEL TYPICAL SECTION ADJUSTED FROM STA. 0+00 TO STA. 0+70 TO TIE INTO STORMSEWER AND EXISTING STREET

PLACE ORANGE CONSTRUCTION FENCE ALONG SPRECHER RD.

PLACE HEAVY DUTY RIPRAP PAD FROM STREET FLUME TO INLETS

AFTER THE STONE BOTTOM AREA OF THE CHANNEL IS GRADED AND COMPLETE PLACE SILT FENCE ALONG THE EDGE UNTIL BACKSLOPE IS GRADED AND ESTABLISHED

PROPERTY LINE

PLACE ORANGE CONSTRUCTION FENCE ALONG DICKY LANE

PROTECT EXISTING GASLINE DURING CONSTRUCTION

PLACE TEMPORARY RIGID FRAME INLET PROTECTION IN INLET AFTER CONSTRUCTION. REMOVE WHEN CONSTRUCTION IS COMPLETE

STONE CONSTRUCTION ENTRANCE

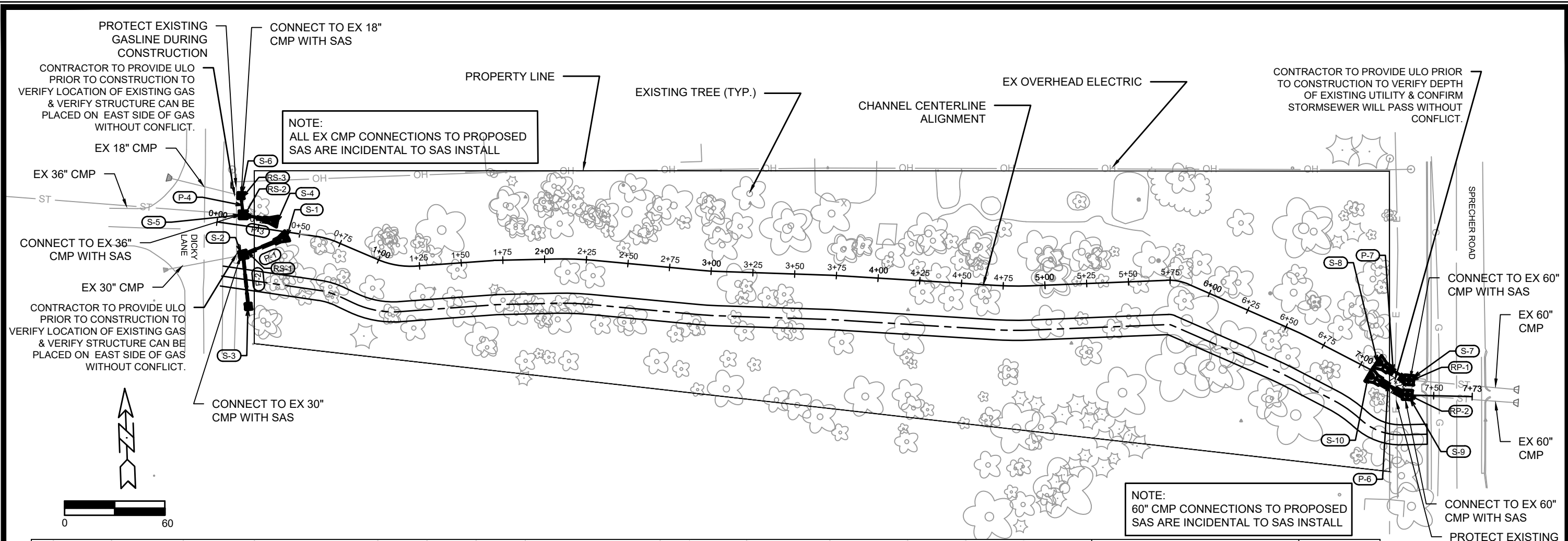
MEDIUM GLACIAL FIELD STONE RIPRAP LINED CHANNEL BOTTOM

ACCESS ROAD

NOTE: REMOVE CLEAR STONE BERMS & SILT FENCE WHEN SIDESLOPES HAVE BEEN MATTED

CHANNEL TYPICAL SECTION ADJUSTED FROM STA. 7+00 TO STA. 7+50 TO TIE INTO STORMSEWER AND EXISTING STREET

STONE CONSTRUCTION ENTRANCE



# STORM SEWER SCHEDULE

PROJECT NAME	SHEET NO.
PROJECT NO. 12960	1 of 1
STORM SEWER SCHEDULE	
CITY OF MADISON	

## PROPOSED STORM STRUCTURES

STRUC. NO.	STATION	LOCATION (OFFSET)	TYPE	TOP OF CASTING	E.I.	DEPTH	NOTES
S-1	0+42.74	RT-2.22'	30" RCP APRON ENDWALL	-	931.00	-	W/GATE
S-2	0+18.22	RT-17.28'	4'X4' SAS	938.00	931.50	6.50	FP, W/R-1878-B7G (1)
S-3	0+25.66	RT-47.42'	3'X3' SAS	936.00	932.31	3.69	W/R-1878-B7G
S-4	0+35.68	LT-5.31'	36" RCP APRON ENDWALL	-	932.00	-	W/GATE
S-5	0+14.87	LT-6.44'	4'X4' SAS	937.50	932.24	5.26	FP, W/R-1878-B7G (2)
S-6	0+11.93	LT-17.61'	3'X3' SAS	937.00	933.64	3.36	W/R-1878-B7G (3)
S-7	7+34.99	LT-9.00'	5'X5' SAS	922.70	914.95	7.75	FP, W/R-1878-B7G (4)
S-8	7+07.74	LT-6.21'	60" RCP APRON ENDWALL	-	916.30	-	W/GATE
S-9	7+34.18	LT-0.11'	5'X5' SAS	922.70	915.13	7.57	FP, W/R-1878-B7G (4)
S-10	7+07.26	RT-3.23'	60" RCP APRON ENDWALL	-	916.30	-	W/GATE

## PROPOSED STORM PIPES

PIPE NO.	FROM (DNSTM)	TO (UPSTM)	DISCH. E.I.	INLET E.I.	PLAN (PAY) LGTH (FT)	PIPE LGTH (FT)	SLOPE (%)	PIPE SIZE	TYPE	NOTES
P-1	S-1	S-2	931.00	931.50	29	27	1.74%	30 IN	TYPE I	
P-2	S-2	S-3	932.00	932.31	31	28	1.00%	24 IN	TYPE I	
P-3	S-4	S-5	932.00	932.24	21	19	1.15%	36 IN	TYPE I	
P-4	S-5	S-6	932.74	933.64	12	8	7.79%	18 IN	TYPE I	
P-6	S-9	S-10	915.20	916.30	26	24	4.23%	60 IN	TYPE I	
P-7	S-7	S-8	915.20	916.30	22	19	5.01%	60 IN	TYPE I	

## EXISTING STORM STRUCTURE REMOVALS

STRUC. NO.	STATION	LOCATION (OFFSET)	TYPE	LENGTH (FT)	NOTES
RS-1	0+21.00	RT-15.54'	30" CMP APRON ENDWALL	4.00	REMOVAL PAID FOR UNDER PIPE REMOVAL
RS-2	0+15.79	LT-6.51'	36" CMP APRON ENDWALL	5.00	REMOVAL PAID FOR UNDER PIPE REMOVAL
RS-3	0+13.50	LT-17.43'	18" CMP APRON ENDWALL	3.00	REMOVAL PAID FOR UNDER PIPE REMOVAL

## STORM PIPE REMOVALS

PIPE REMOV.	REMOVE FROM	LENGTH (FT)	SIZE	TYPE
RP-1	END OF PIPE	3	60"	CMP
RP-2	END OF PIPE	3	60"	CMP

## SPECIFIC NOTES:

- (1) CONNECT TO EX 30" CMP, CONNECTION PAID AS INCIDENTAL TO S-2
- (2) CONNECT TO EX 36" CMP, CONNECTION PAID AS INCIDENTAL TO S-5
- (3) CONNECT TO EX 18" CMP, CONNECTION PAID AS INCIDENTAL TO S-6
- (4) CONNECT TO EX 60" CMP, CONNECTION PAID AS INCIDENTAL TO S-8 & S-10

## STANDARD NOTES:

- PLAN LENGTH (PAY LENGTH) IS FROM CENTER OF STRUCTURE TO CENTER OF STRUCTURE. PIPE LENGTH IS ACTUAL LENGTH OF PIPE FROM STRUCTURE WALL TO STRUCTURE WALL. SLOPE CALCULATED USING PIPE LENGTH.
- ABBREVIATIONS: AE = APRON ENDWALL; RCP = REINFORCED CONCRETE PIPE; HERCP = HORIZONTAL ELLIPTICAL REINFORCED CONCRETE PIPE; DNA = DOES NOT APPLY; SAS = SEWER ACCESS STRUCTURE; LP = LOW POINT INLET STRUCTURE; FP = FIELD POURED STRUCTURE; TR = TOP OF CONC
- APPROXIMATE DISCHARGE E.I. GIVEN, ADJUST E.I. AND PIPE SLOPE IN THE FIELD.
- TOP OF CASTING GRADE GIVEN IS THE TOP OF CURB FOR INLET STRUCTURES AND THE FLOWLINE OF THE CLOSED CASTING FOR SAS'S.
- ALL REINFORCED CONCRETE PIPES TO BE CLASS III UNLESS OTHERWISE NOTED.
- SURVEYOR TO CONFIRM THAT ALL INLET STATION / OFFSETS LINE UP WITH PROPOSED CURB AND GUTTER.

- ALL FIELD POURED SAS STORM STRUCTURES SHALL BE CONSTRUCTED IN ACCORDANCE WITH STANDARD DETAIL DRAWING 5.7.3. ALL PRECAST SAS STORM STRUCTURES SHALL BE CONSTRUCTED IN ACCORDANCE WITH STANDARD DETAIL DRAWING 5.7.5.
- ALL STRUCTURES CALLED OUT AS FIELD POURED SHALL BE FIELD POURED. ALL OTHER STRUCTURES (NOT INDICATED AS FIELD POURED) SHALL BE SUBMITTED TO CITY ENGINEERING FOR APPROVAL IF PRECAST STRUCTURES ARE PREFERRED. CONTACT GRANT POKOS OF CITY ENGINEERING AT G

12960	MADISON, WI	9430
STORMSEWER PLAN & STORM SCHEDULE		
SPRECHER ROAD GREENWAY IMPROVEMENTS		
M:\DESIGN\Projects\12960\CAD\Storm\12960 Sprecher Greenway Storm_Grading.dwg		
12960	U1	

# LEGEND



DENOTES TREES OVER 6" DIAMETER TO BE REMOVED FOR GREENWAY IMPROVEMENTS. ALL OTHER TREES UNVER 6" DIAMETER, BRUSH AND DOWNED TREES SHALL BE REMOVED BY THE CONTRACTOR WITH THE LIMITS OF DISTURBANCE UNDER THE BRUSHING BID ITEM. VERIFY TREES TO BE REMOVED DURING CONSTRUCTION WITH ENGINEER



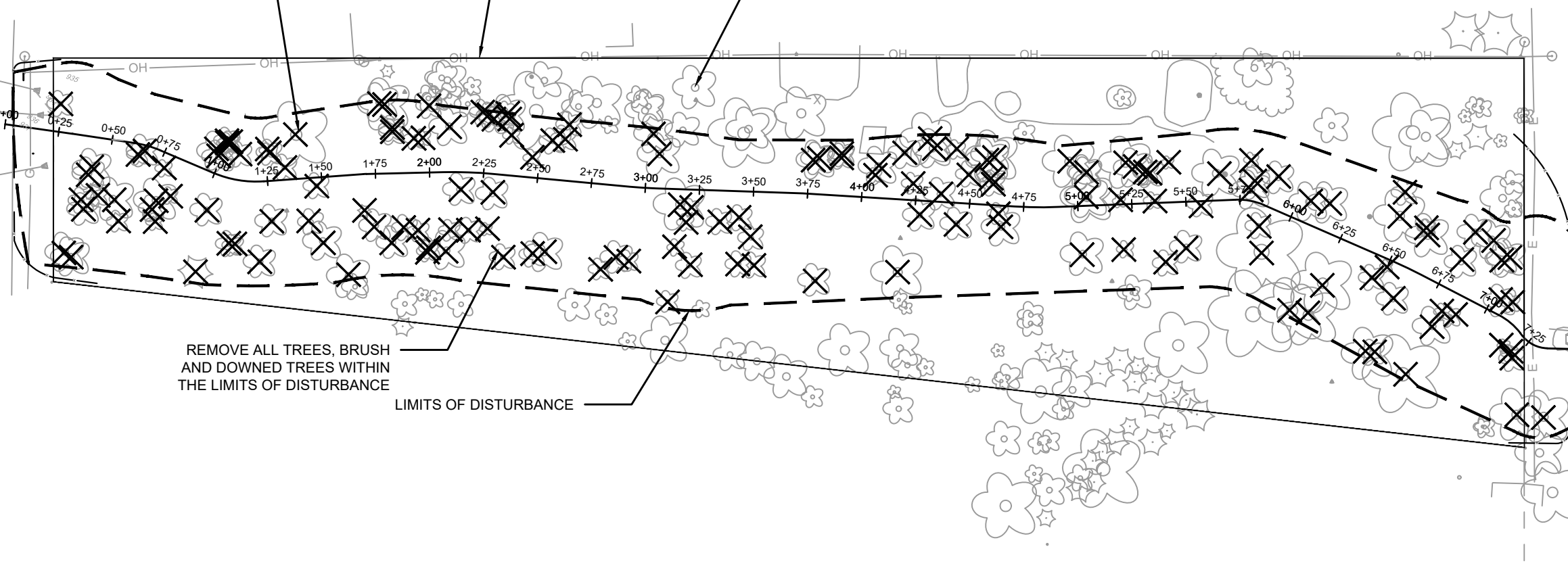
DENOTES TREES OVER 6" DIA TO BE REMOVED DURING CONSTRUCTION (TYP.)

PROPERTY LINE

EXISTING TREE (TYP.)

REMOVE ALL TREES, BRUSH AND DOWNED TREES WITHIN THE LIMITS OF DISTURBANCE

LIMITS OF DISTURBANCE



## GENERAL NOTES

1. TREES CALLED OUT ARE TREES THAT FALL WITHIN THE GRADING LIMITS
2. THE CONTRACTOR SHALL CONSULT THE ENGINEER PRIOR TO LIMBING ANY TREES THAT ARE TO REMAIN
3. BRANCHES BROKEN ON SAVED TREES, DURING THE FELLING OF ADJACENT TREES, SHALL BE CUT OR LIMBED IN ACCORDANCE WITH THE STANDARD SPECIFICATIONS.
4. STUMPS WITHIN THE GRADING LIMITS SHALL BE GRUBBED OR PULLED TO MEET FINAL GRADE.

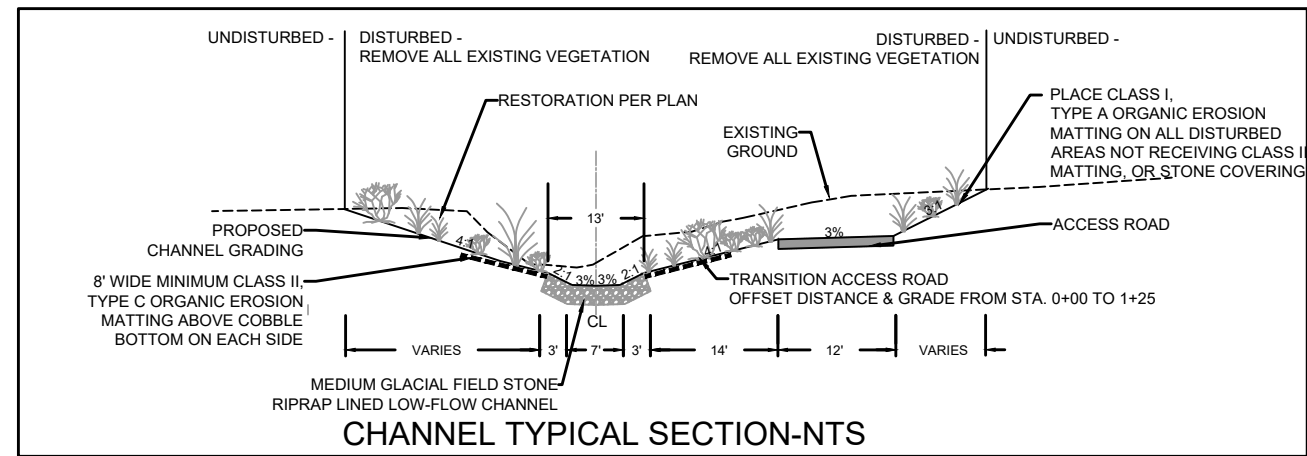
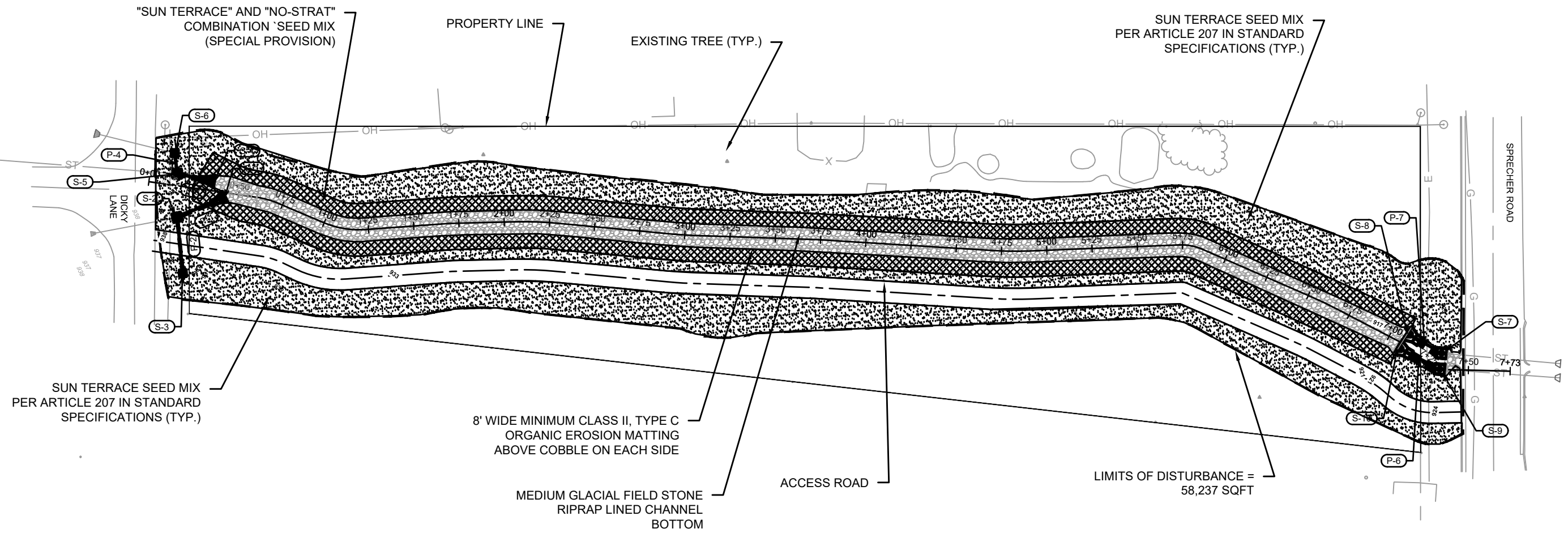
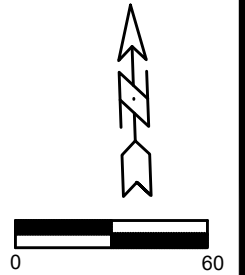
MARK	REVISION	DATE	BY
12960	12960	12/14/2021	CP1

12960  
MADISON, WI  
9430

CLEARING PLAN  
SPRECHER ROAD GREENWAY IMPROVEMENTS  
M:\DESIGN\Projects\12960\CAD\Storm\12960 Sprecher Greenway Storm\_Grading.dwg



12960  
CP1



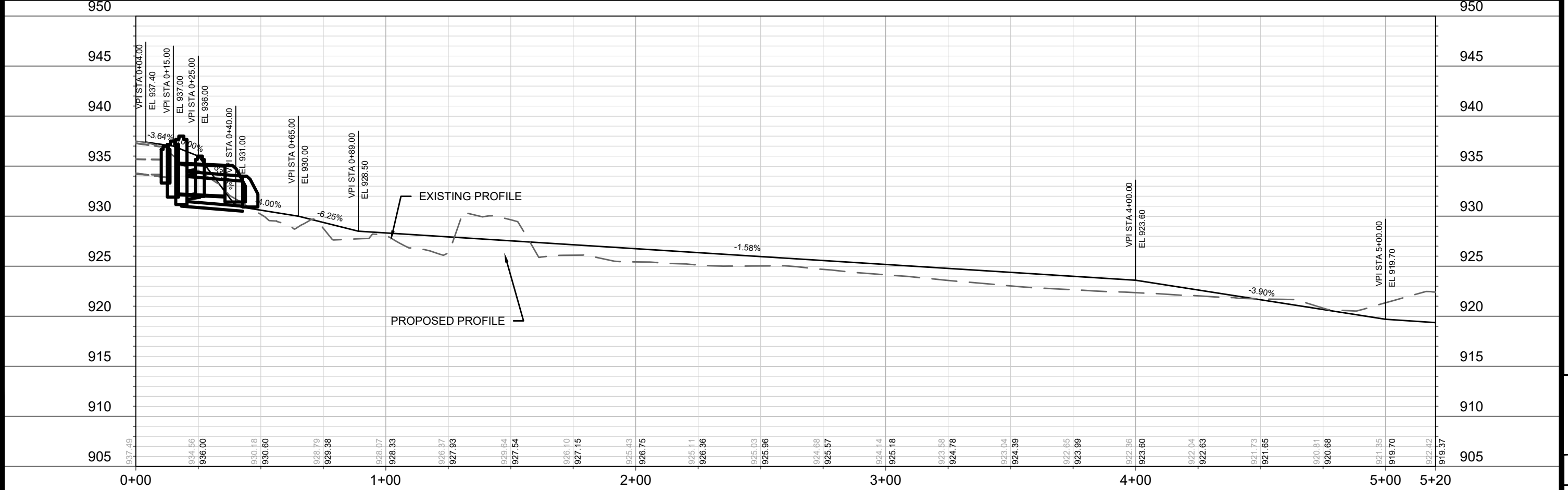
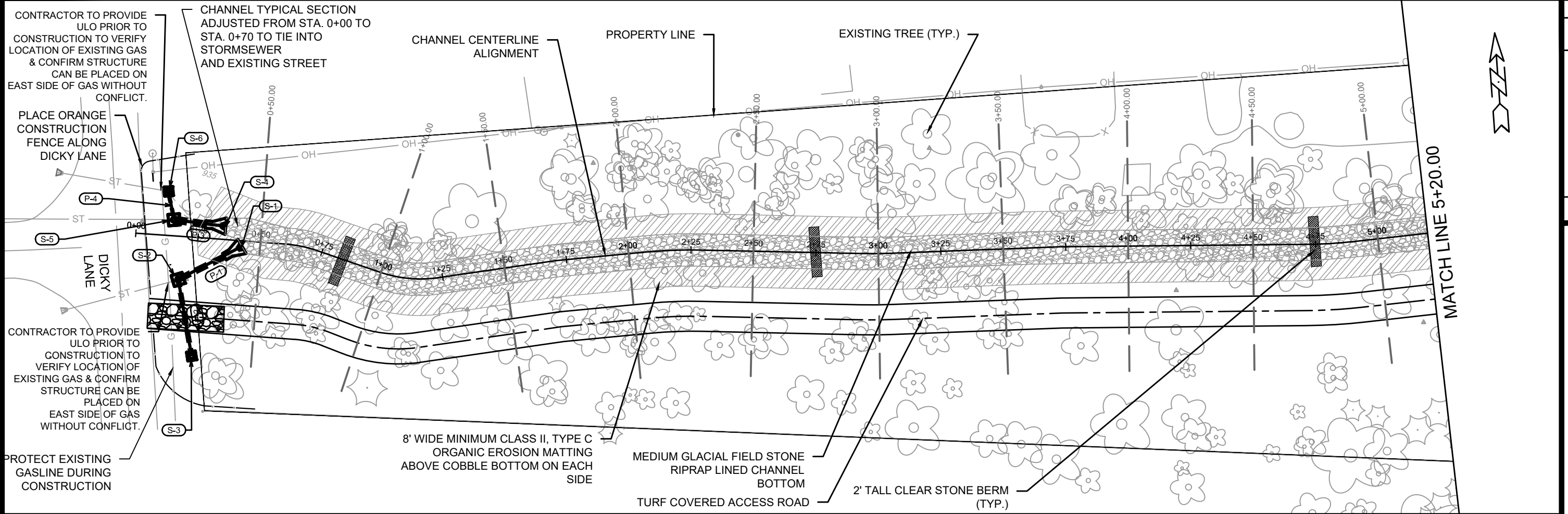
MARK	REVISION	DATE	BY
12960	12960	12/14/2021	VP1

12960  
MADISON, WI  
9430

VEGETATION PLAN  
SPRECHER ROAD GREENWAY IMPROVEMENTS  
M:\DESIGN\Projects\12960\CAD\Storm\12960 Sprecher Vegetation Plan\_cw.dwg  
CONTRACT NO:



12960  
VP1



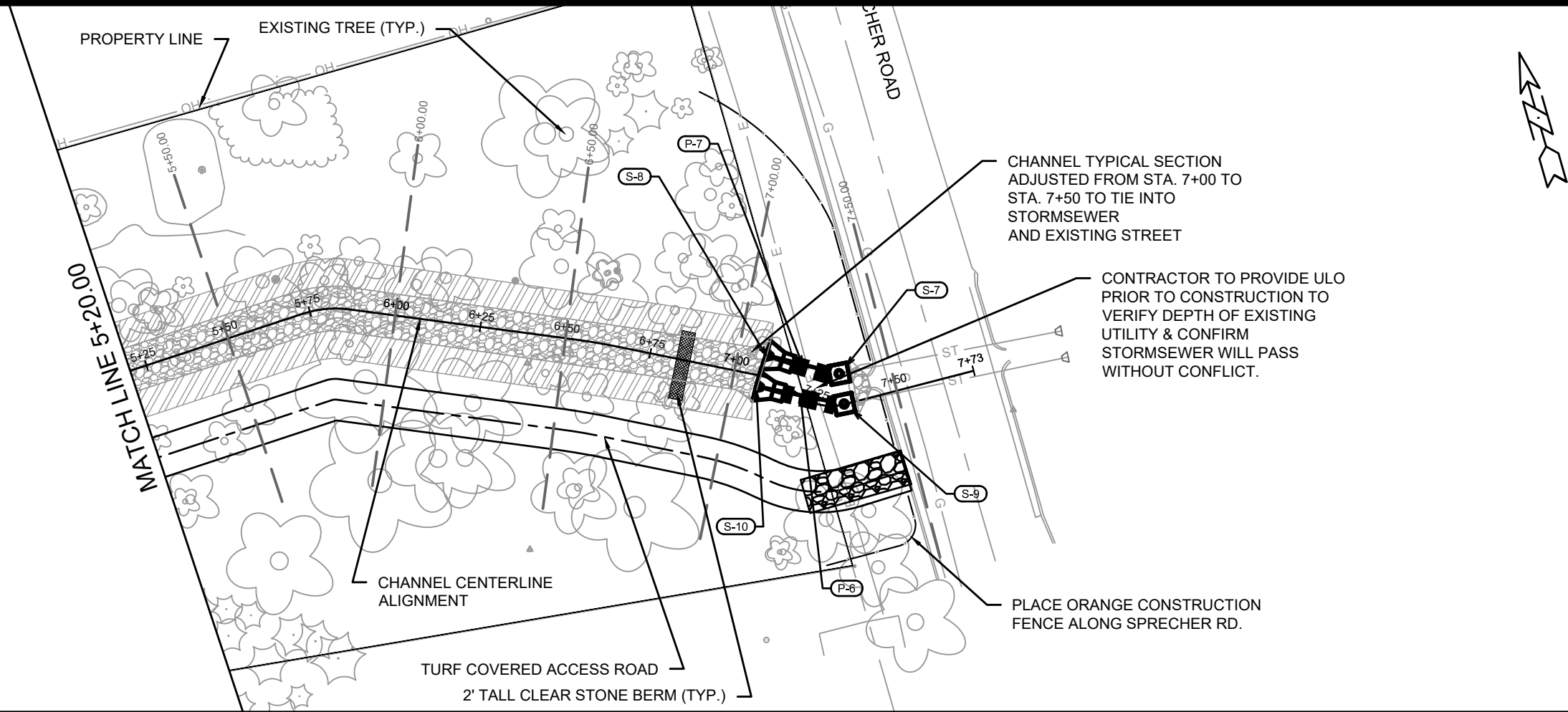
MARK	REVISION	DATE	BY

12960  
MADISON, WI  
CONTRACT NO: 9430

PLAN & PROFILE - (1)  
SPRECHER ROAD GREENWAY IMPROVEMENTS  
M:\DESIGN\Projects\12960\CAD\Storm\12960 Sprecher Greenway Storm\_Grading.dwg



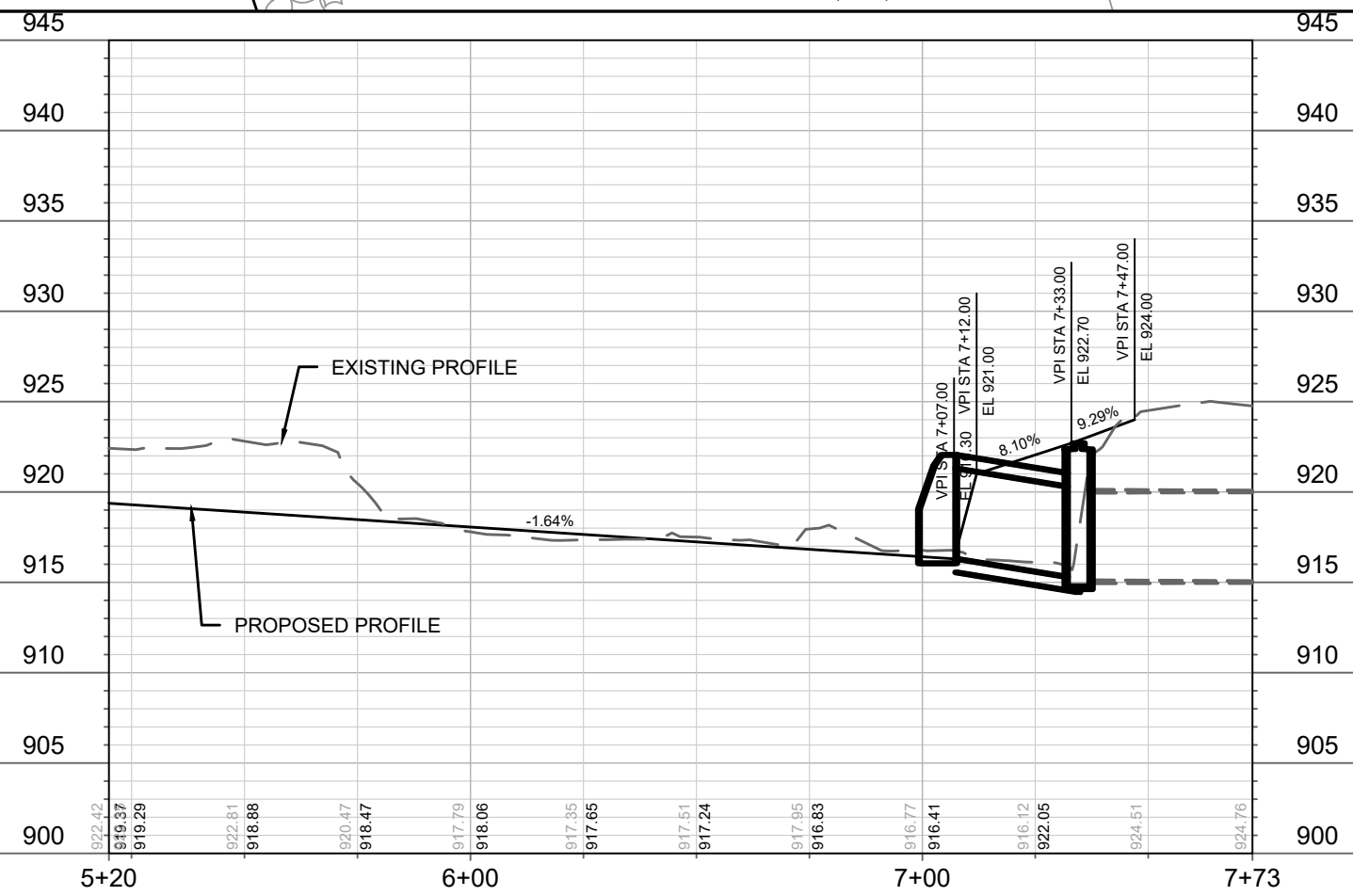
12960  
P1



CHANNEL TYPICAL SECTION ADJUSTED FROM STA. 7+00 TO STA. 7+50 TO TIE INTO STORMSEWER AND EXISTING STREET

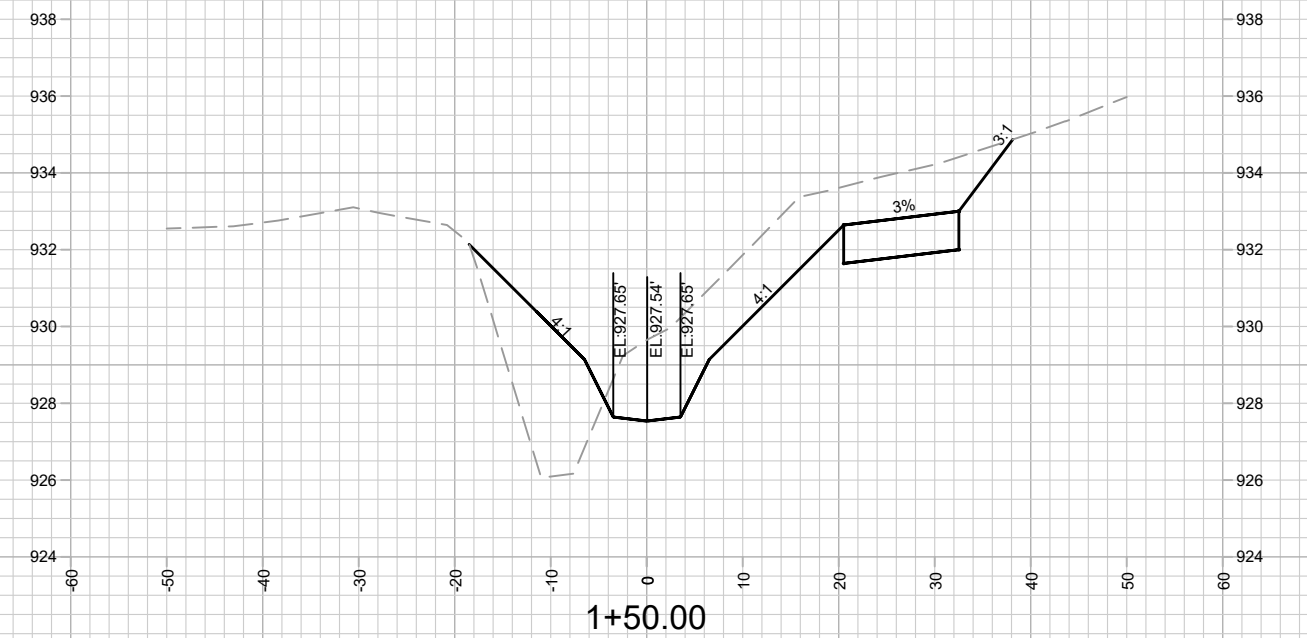
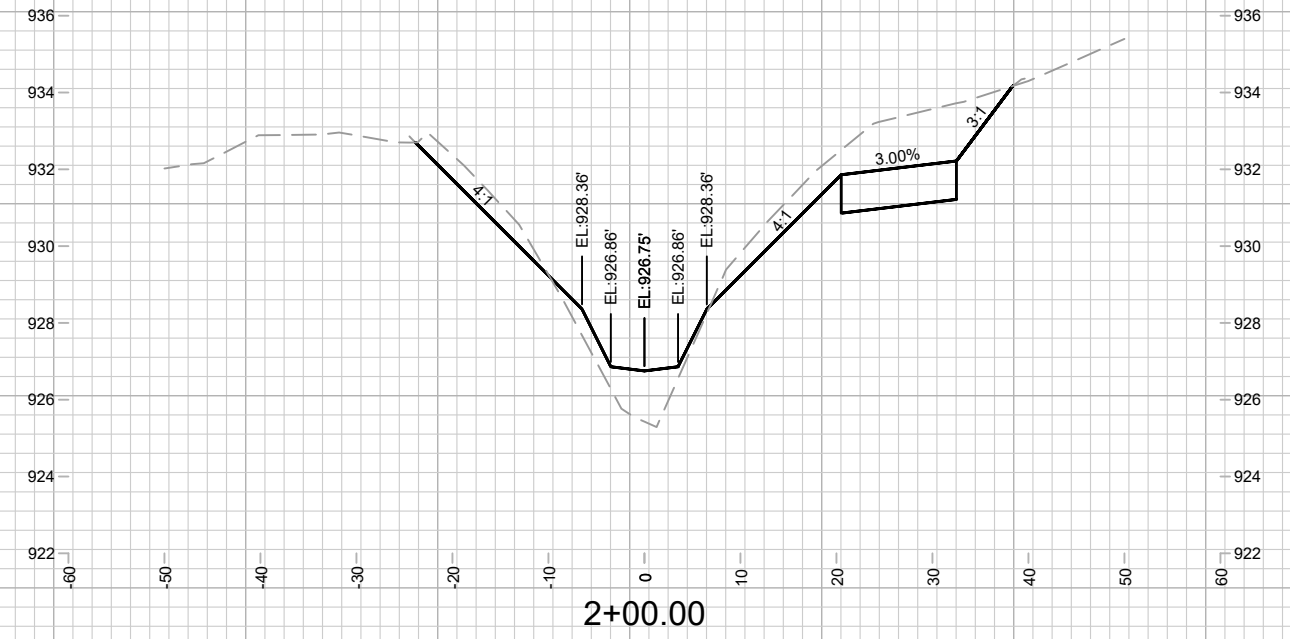
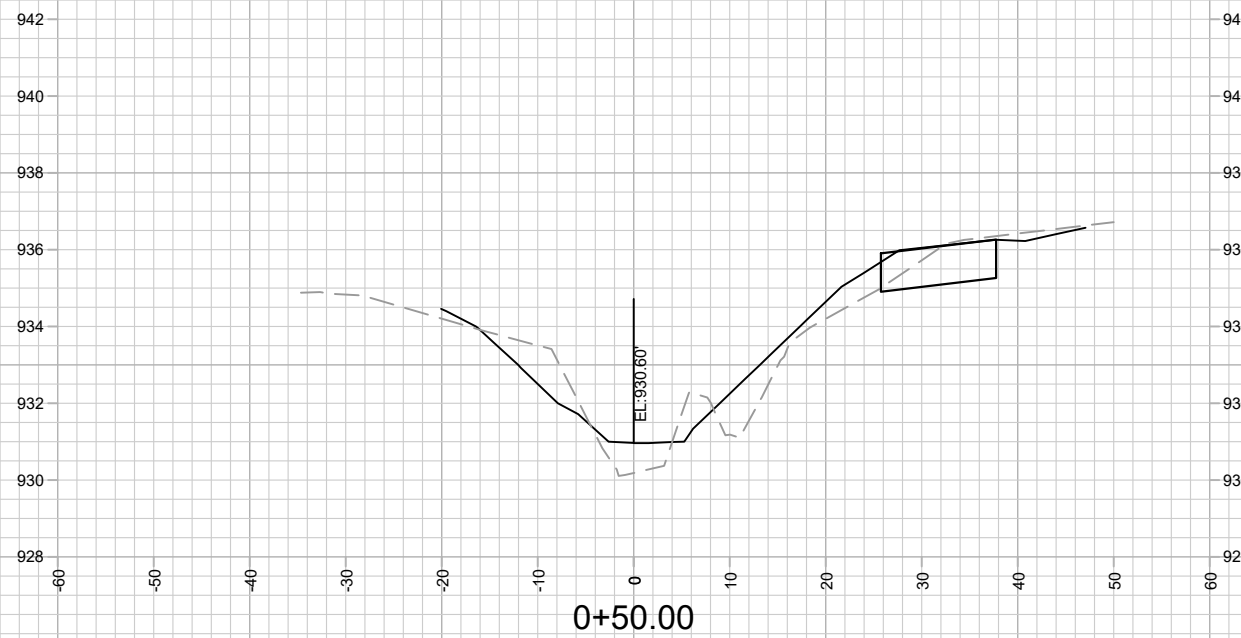
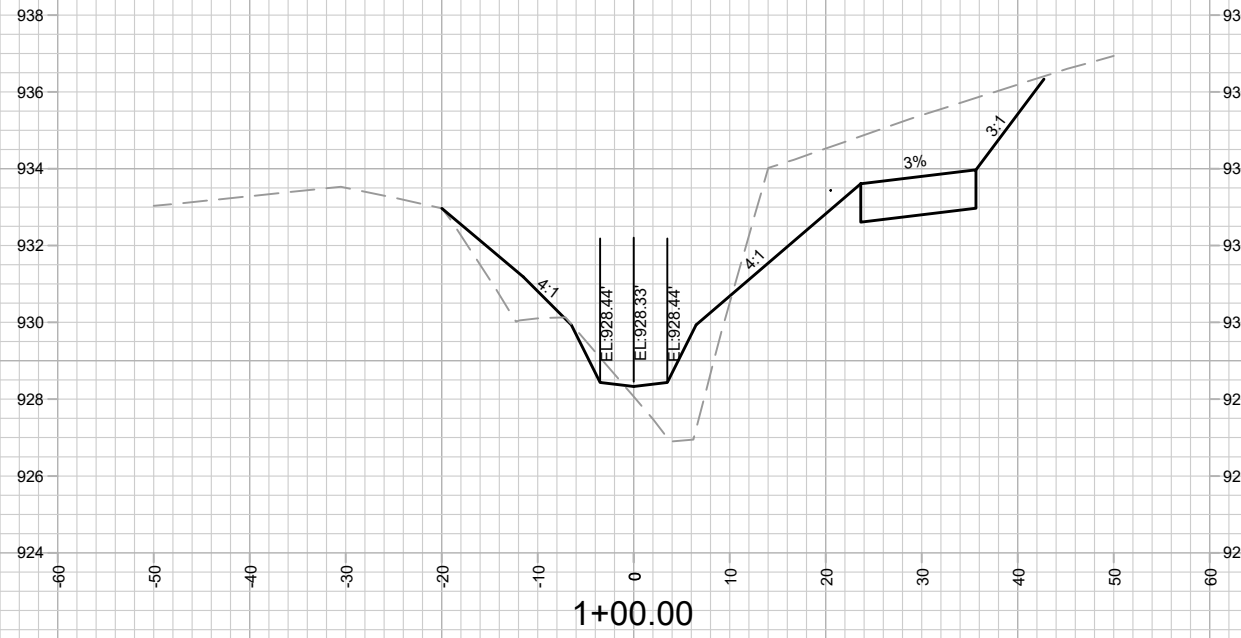
CONTRACTOR TO PROVIDE ULO PRIOR TO CONSTRUCTION TO VERIFY DEPTH OF EXISTING UTILITY & CONFIRM STORMSEWER WILL PASS WITHOUT CONFLICT.

PLACE ORANGE CONSTRUCTION FENCE ALONG SPRECHER RD.



12960	12960	12960	12960	12960	12960	12960	12960
MADISON, WI	REVISION	DATE	BY	MARK	DESIGNED BY: GVP	DATE: 12/14/2021 3:42 PM	SCALE: 1" = 40'
SPRECHER ROAD GREENWAY IMPROVEMENTS	12960	9430	CONTRACT NO.:	12960	P2		
PLAN & PROFILE - (2)							
12960							
P2							





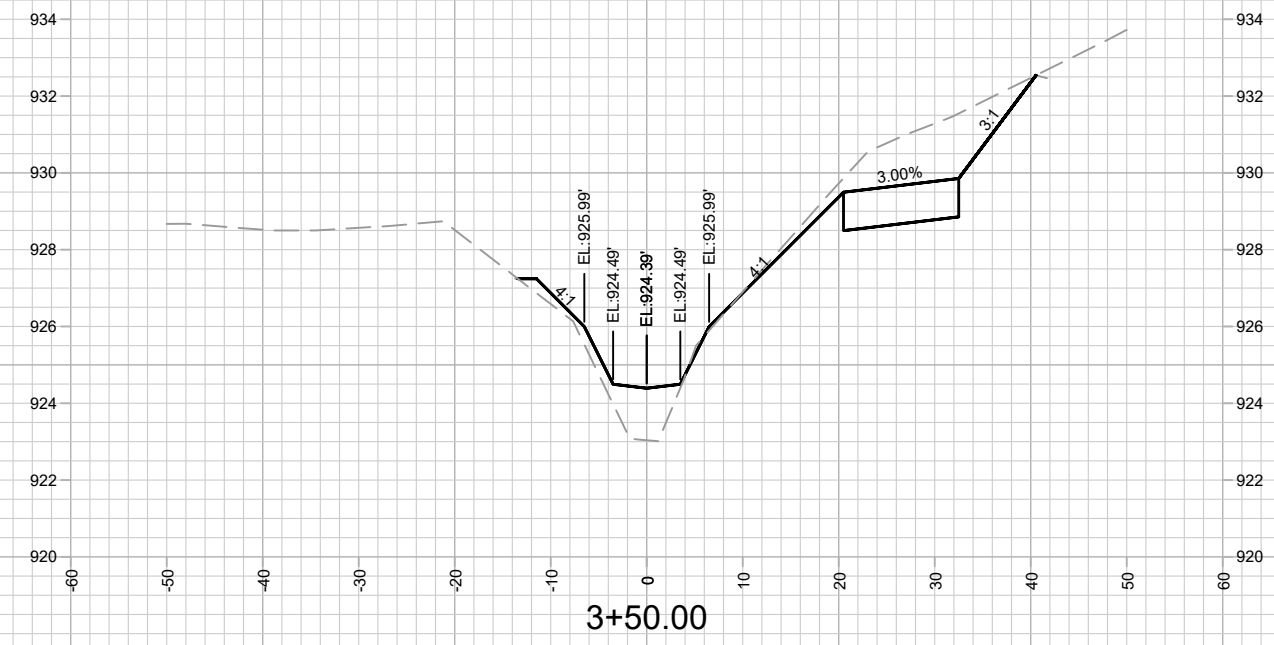
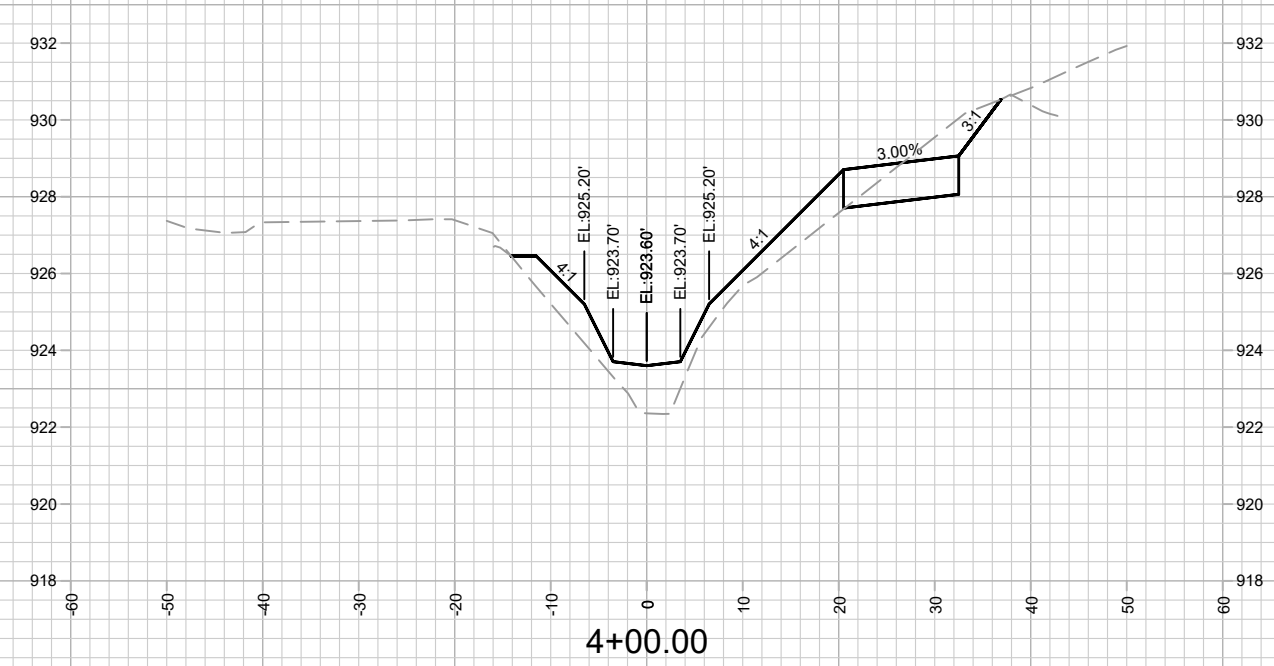
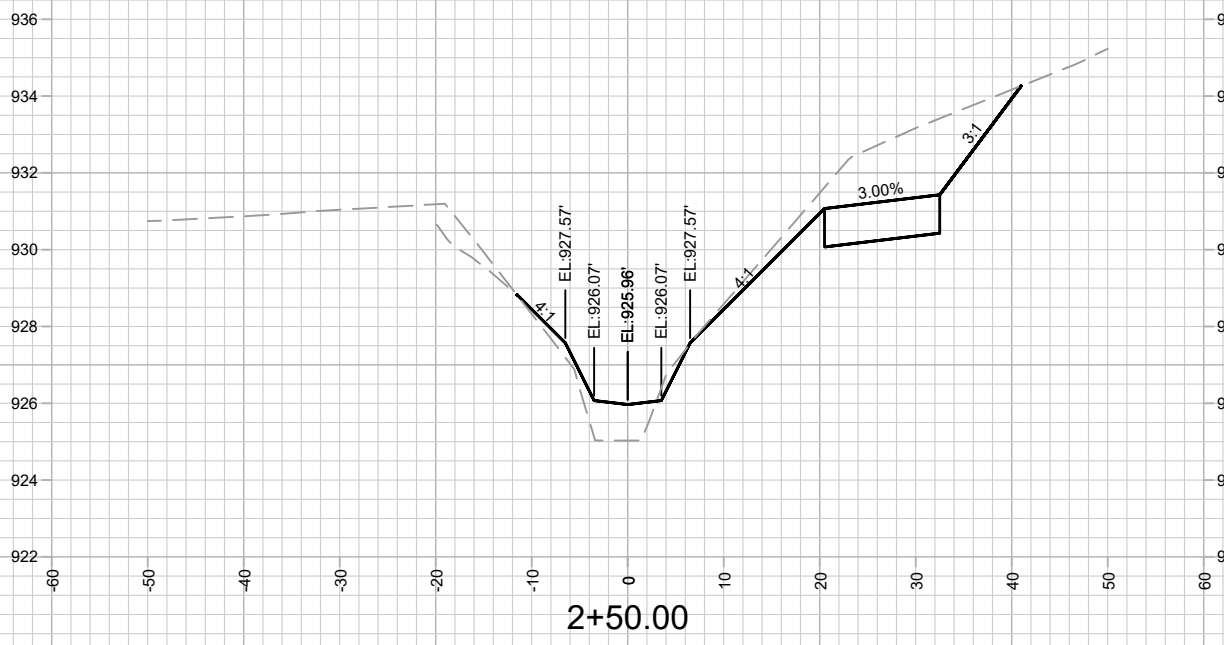
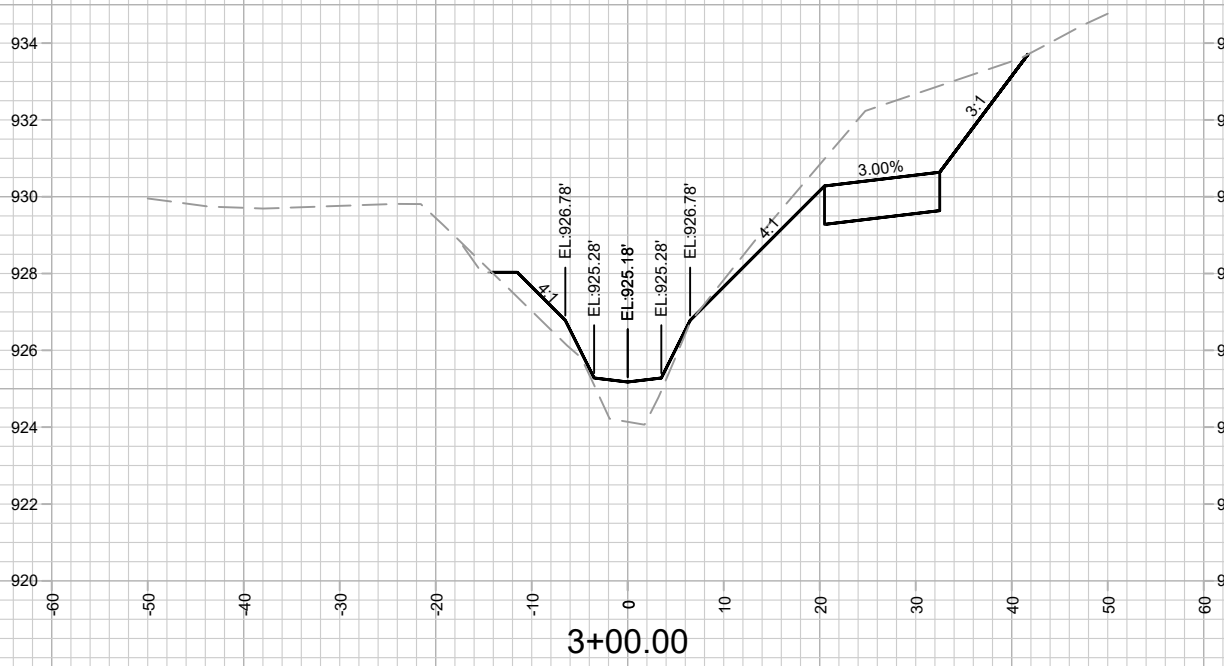
MARK	REVISION	DATE	BY

12960  
MADISON, WI  
9430  
CONTRACT NO:

CROSS SECTION - (1)  
SPRECHER ROAD GREENWAY IMPROVEMENTS  
M:\DESIGN\Projects\12960\CAD\Storm\12960 Sprecher Greenway Storm\_Grading.dwg




12960  
X1

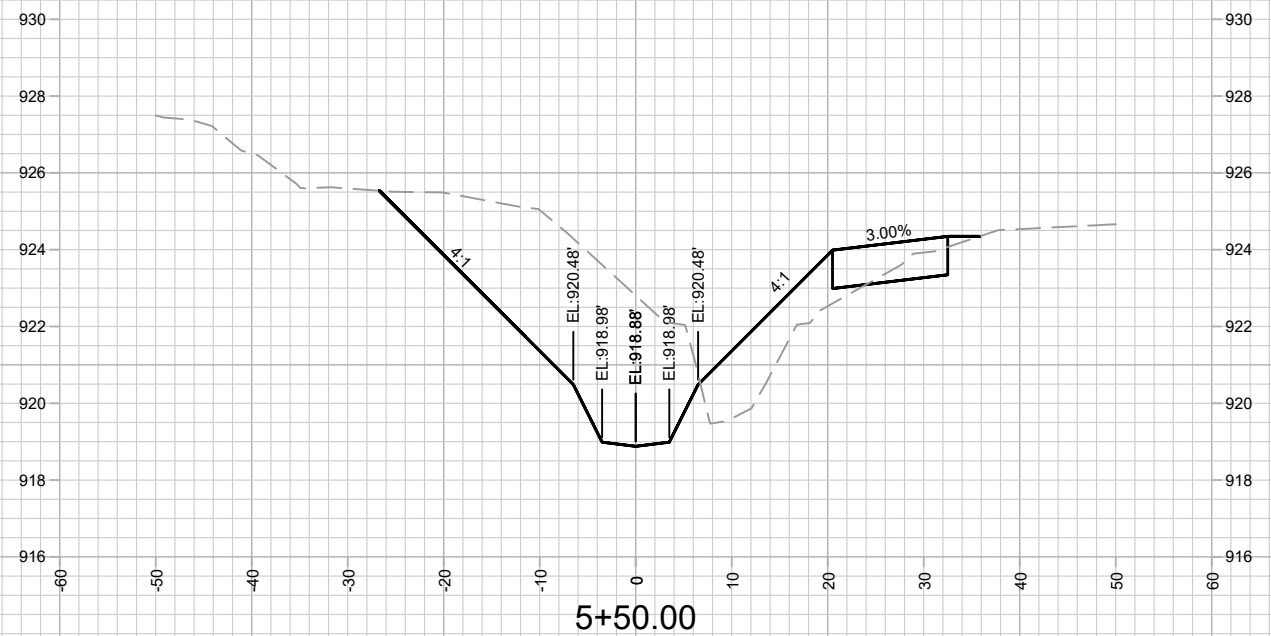
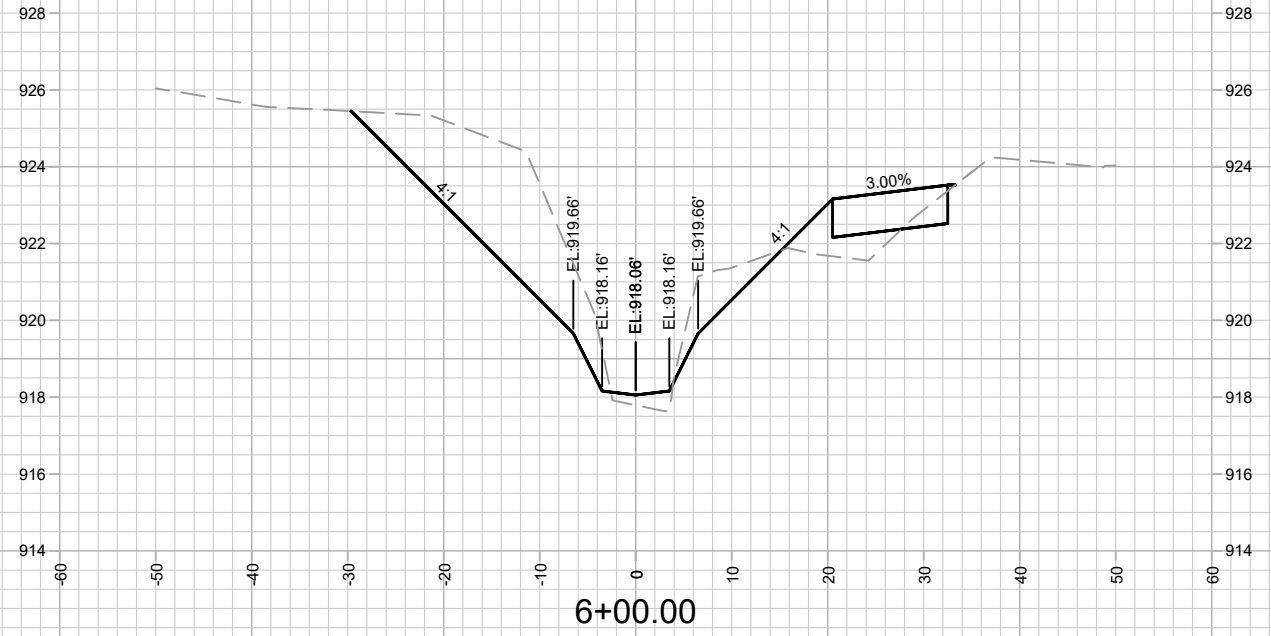
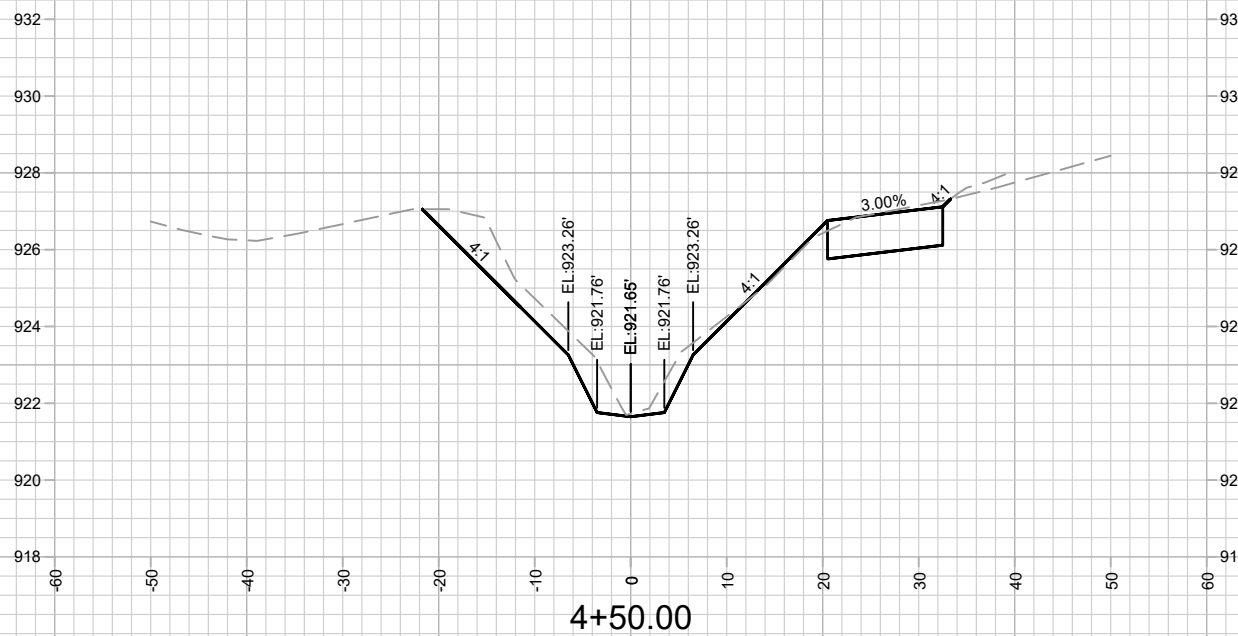
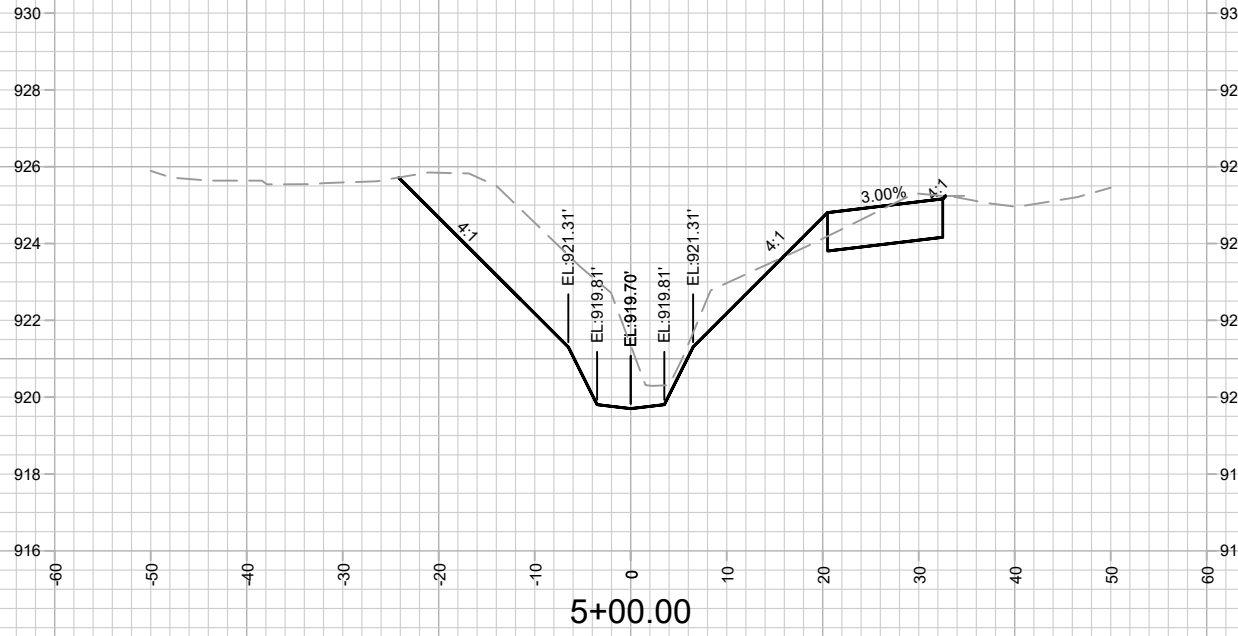


MARK	REVISION	DATE	BY
12960	12714/2021 3:42 PM		
Designed By: GVP	Date: 12/14/2021 3:42 PM	Scale: #####	X2

12960  
 MADISON, WI  
 9430  
 CONTRACT NO:  
 SPRECHER ROAD GREENWAY IMPROVEMENTS  
 M:\DESIGN\Projects\12960\CAD\Storm\12960 Sprecher Greenway Storm\_Grading.dwg



12960  
 X2



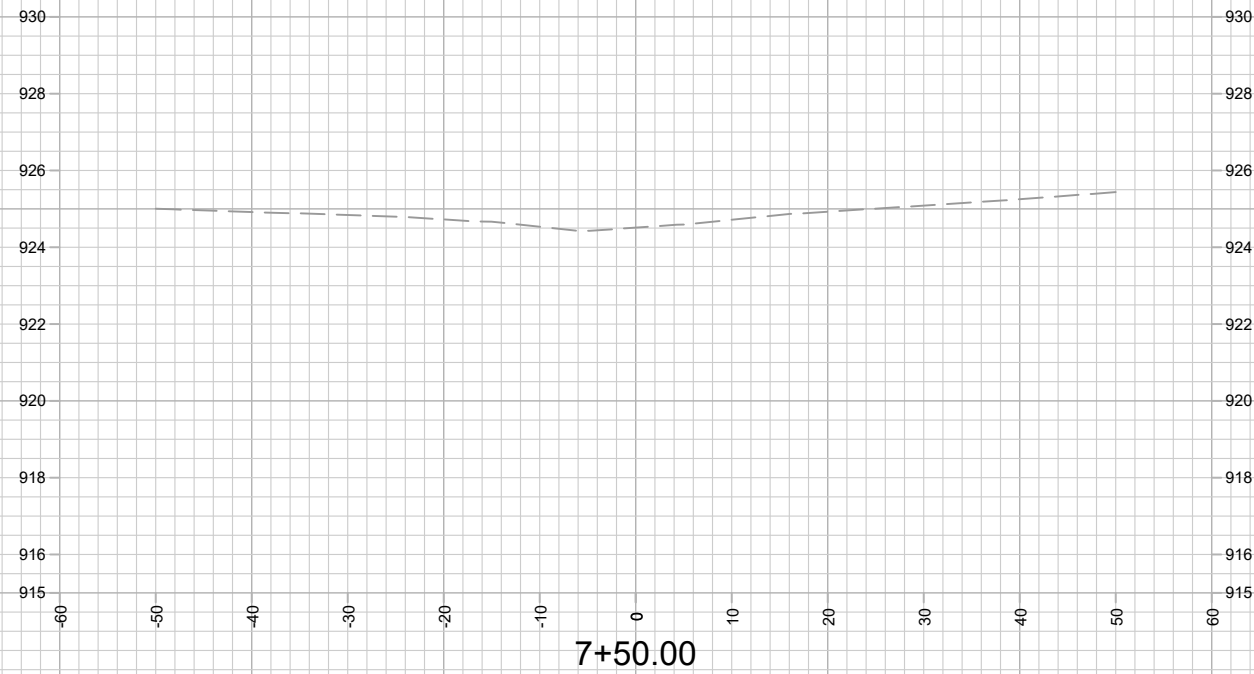
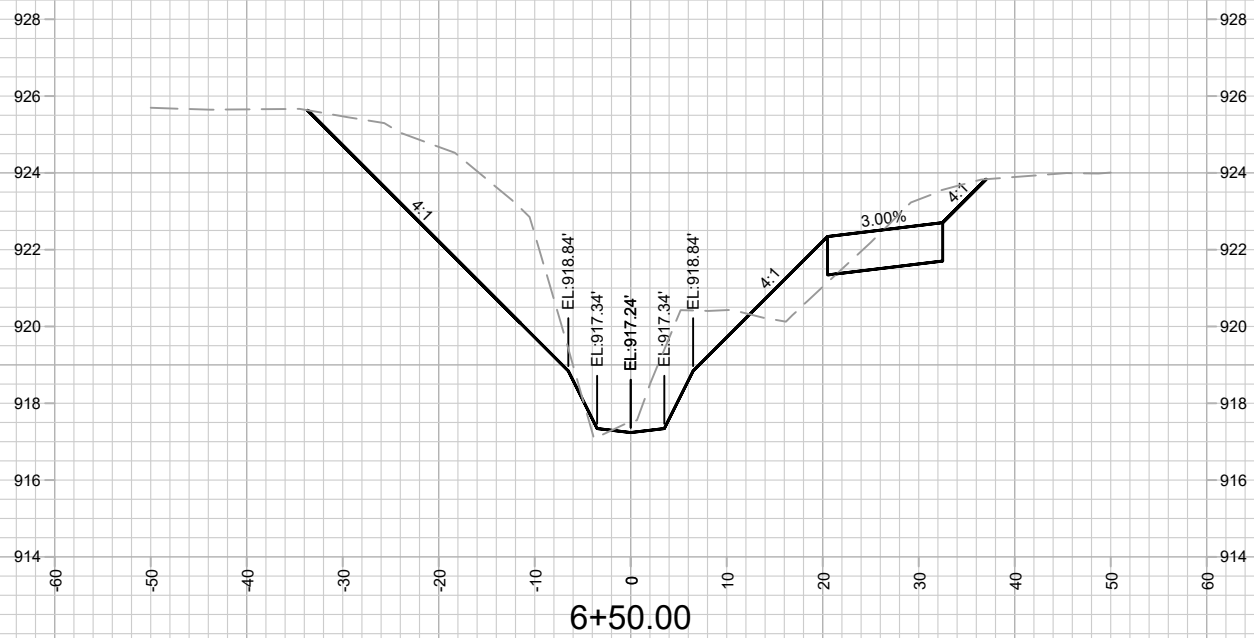
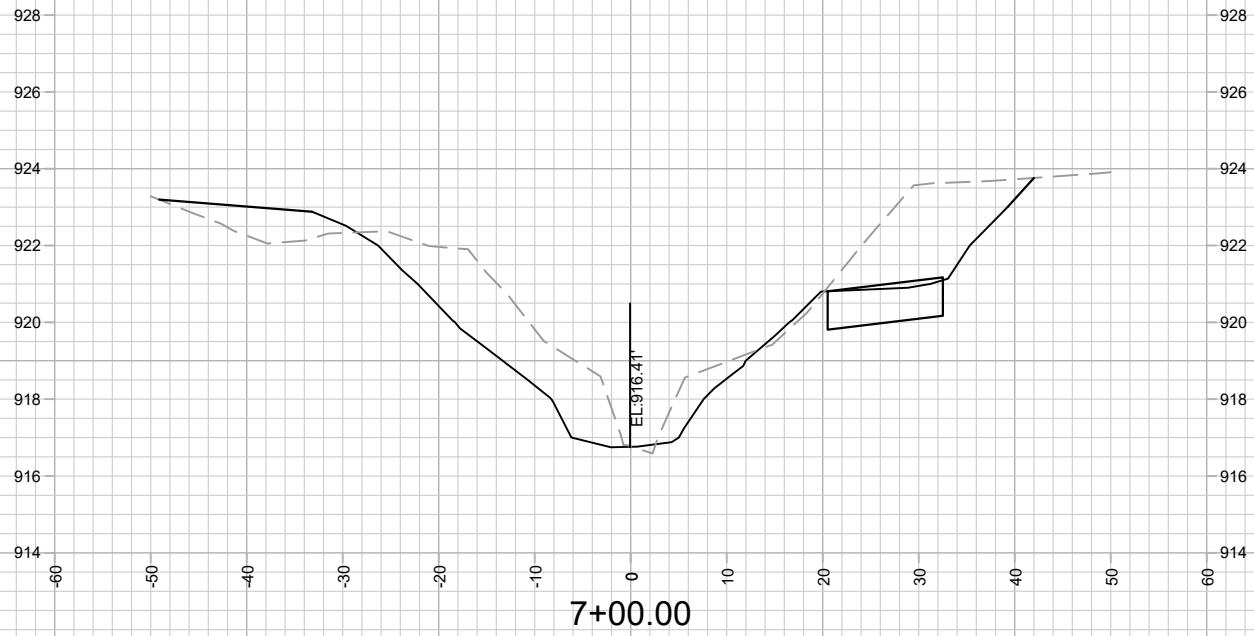
MARK	REVISION	DATE	BY

12960  
MADISON, WI  
9430  
CONTRACT NO:

CROSS SECTION - (3)  
SPRECHER ROAD GREENWAY IMPROVEMENTS  
M:\DESIGN\Projects\12960\CAD\Storm\12960 Sprecher Greenway Storm\_Grading.dwg



12960  
X3



12960  
X4

CROSS SECTION - (4)  
SPRECHER ROAD GREENWAY IMPROVEMENTS  
M:\DESIGN\Projects\12960\CAD\Storm\12960 Sprecher Greenway Storm\_Grading.dwg

12960  
MADISON, WI  
CONTRACT NO: 9430

MARK	REVISION	DATE	BY
12960	Designed By: GVP	Date: 12/14/2021 3:42 PM	Scale: #####
			X4